



**9 Lums Hill Rise**  
Matlock, DE4 3FX

**£372,400**



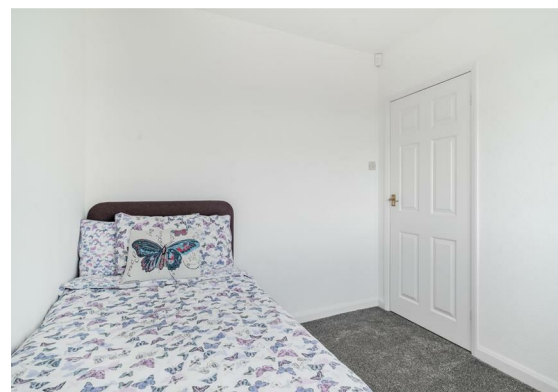
## 9 Lums Hill Rise

, Matlock, DE4 3FX

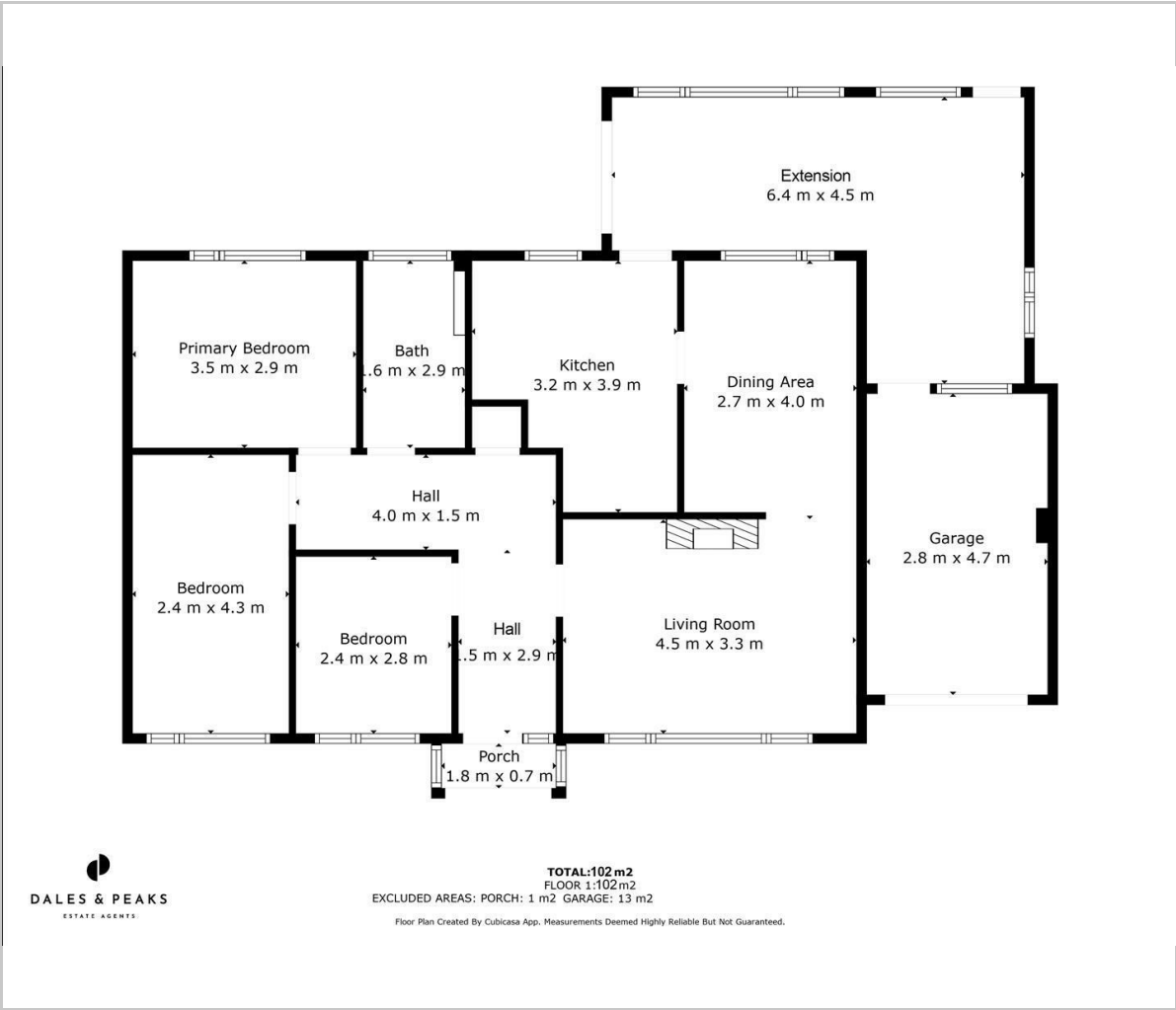
Situated in a highly sought after locations, is this spacious 3 bedroom detached bungalow, occupying a generous and private plot with stunning views towards Riber Castle. Offering 1097 sqft of accommodation, the property comprises; Entrance porch and hallway with storage cupboard, dual aspect open plan living and dining room, separate kitchen with ample cupboard space and breakfast bar, conservatory with doors onto the patio and rear garden. 2 double bedrooms with built in storage space, a single bedroom and shower room. The exterior benefits from beautifully presented gardens to the front and rear with patio areas, a single garage and driveway to the front providing off street parking for multiple vehicles and picturesque views of the surrounding countryside and towards Riber Castle.

**Dales and Peaks ForwardMove**  
- Please read





Floor Plan

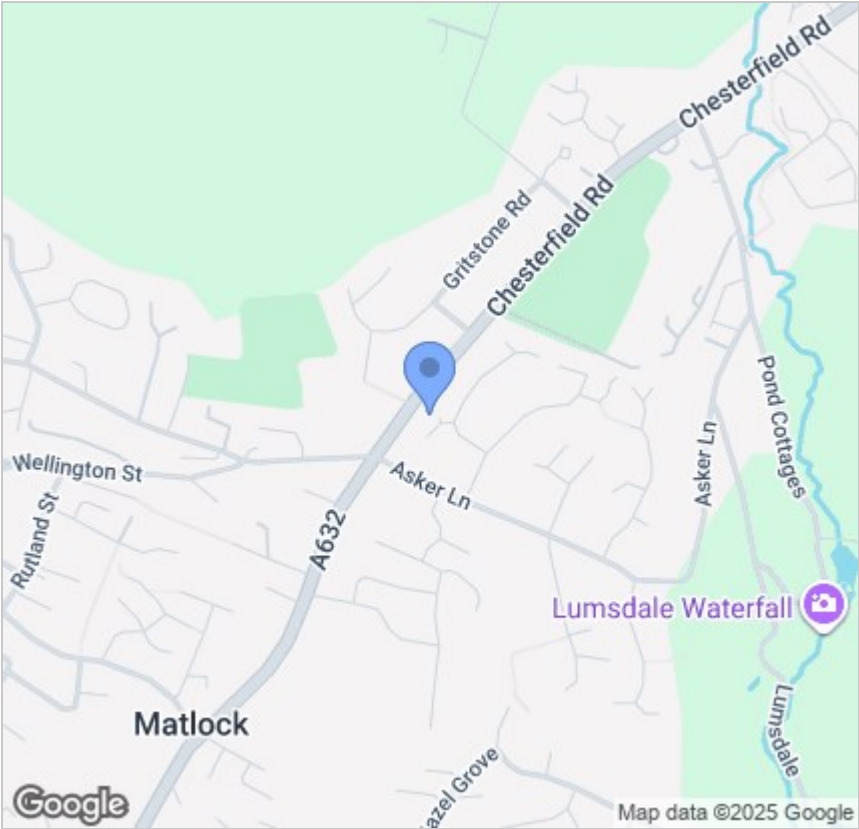


Viewing

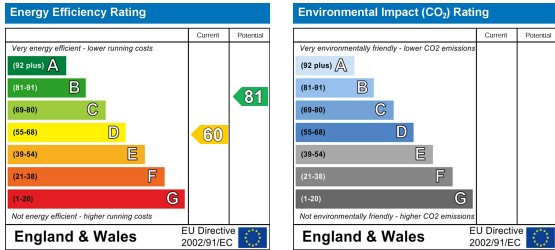
Please contact our Chesterfield Office on 01246 567540 if you wish to arrange a viewing appointment for this property or require further information.

These particulars, whilst believed to be accurate are set out as a general outline only for guidance and do not constitute any part of an offer or contract. Intending purchasers should not rely on them as statements of representation of fact, but must satisfy themselves by inspection or otherwise as to their accuracy. No person in this firms employment has the authority to make or give any representation or warranty in respect of the property.

Area Map



Energy Efficiency Graph



131 Chatsworth Road, Chesterfield, Derbyshire, S40 2AP  
T: 01246 567540



E: info@dalesandpeaks.co.uk  
www.dalesandpeaks.co.uk